

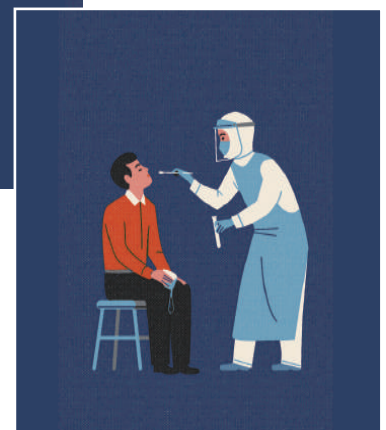
COVID-19 SMART TESTING BOOTH



The only effective long-term solution for safe & smart COVID-19 testing.

Major government and international health institutions project that COVID-19 could persist until 2024, and that similar highly contagious diseases will continue to occur.

The COVID-19 Smart Testing Booth is the ultimate solution for keeping healthcare professionals safe while rapidly and efficiently testing patients as part of a comprehensive testing protocol for containing viral outbreaks.





TOGA-TBR01F (COVID-19 SMART TESTING BOOTH)

BENEFITS

- Made by experienced manufacturer with over 10 years of laboratory EHS equipment manufacturing experience
- Effective protection for healthcare technicians from viral infection
- 2-stage clean air filtration system
- Built-in air conditioner & heater
- Testing procedure-optimized workstation
- Can be connected and installed in a row (parallel construction) to save space and boost convenience
- Available in 5 different colors with graphic logo /name printing for institutions



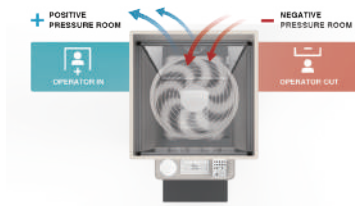
KEY FEATURES

| Protect Technicians From Viral Contagion



PRE-FILTER + HEPA FILTER

2-stage filtration system (pre-filter + HEPA filter) purifies the air of fine dust, removes bacteria and reduces the likelihood of viral exposure, keeping medical technicians safe while providing a clean, pleasant work environment.



High-efficiency Bi-directional Fan Module

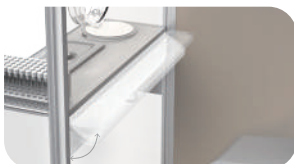
Creates and maintains a positive or negative pressure system the internal chamber to effectively prevent the spread of infectious contaminants and maintain a sterile testing environment



Air Conditioning and Heating System

Provides a pleasant and comfortable environment for healthcare professionals who conduct testing for long periods of time

| Ergonomic Design



Multifunctional Workstation

Optimized for the coronavirus testing process and allows healthcare professionals to quickly, conveniently and comfortably conduct testing. (workstation has a maximum load of 100kg)

Motion-sensor Operated Disposal

Streamline testing process by quickly and efficiently disposing of consumables and other waste quickly and efficiently dispose of consumables and then move on to the next patient. (Optional)

Transparent, Durable Polycarbonate Window

Provides full visibility for healthcare professionals and patients. Gradient coating applied to bottom half of the window for privacy.

8-inch Latex Glove Port

Avoid inconvenience during the testing process while ensuring safety and usability.

Internal Folding Shelf

Folding shelf for simple work and user convenience

LED Control Panel

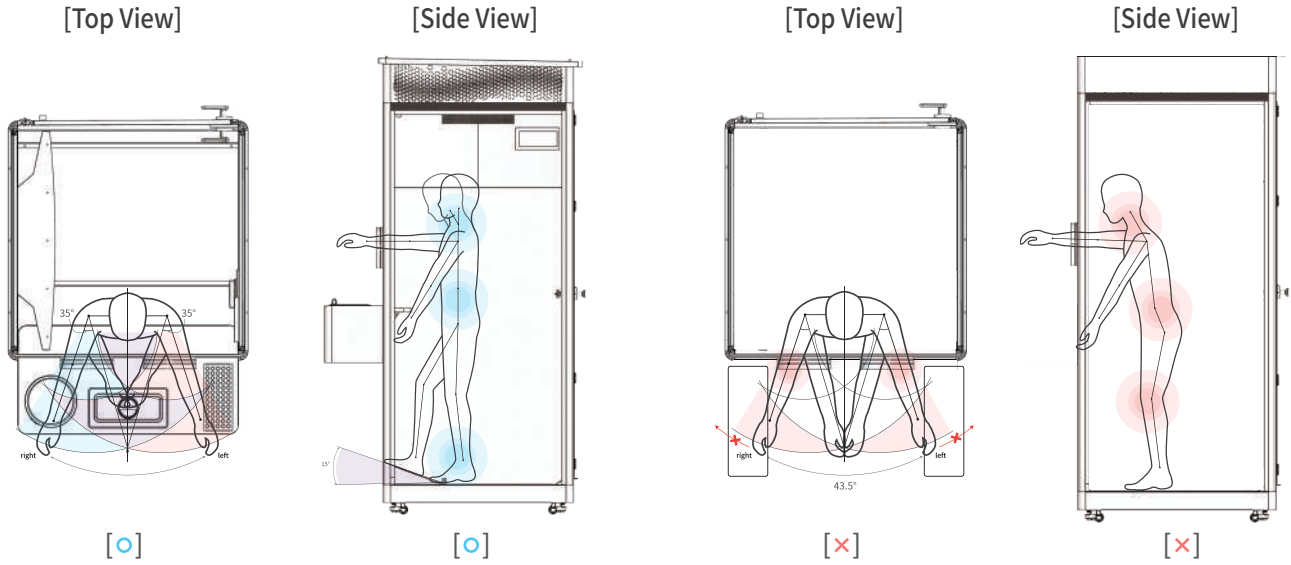
Easily and conveniently operate the fan, change between positive and negative pressure systems, adjust fan speed, turn on/off the light and operate the air conditioning / heating system.

Intercom System

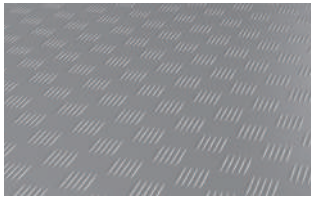
Headset and speaker system provided for healthcare professionals to easily communicate with patients, speeding up the testing process

Ergonomic Design

- Ensures comfort and promotes good posture owing to ergonomic dimensions and design
- Designed to minimize physical stress and discomfort when used for long periods of time



Other Convenience Features



Slip-resistant Flooring



LED Light



15 ° Footplate



Portable Caster Wheels



Elegant Wave Design

Aesthetic and elegant wave design used for heat dissipation



Key Lock Door Handle

Door locks to ensure safety of the booth operator and control booth access, and prevents security issues when the booth is not in use.



Universal External Power Supply & Internal Power Outlet w/ Safety Cover

Universal external power supply and 2 internal power outlets provided for user convenience

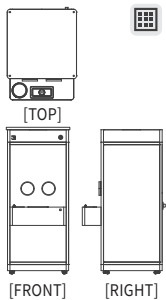
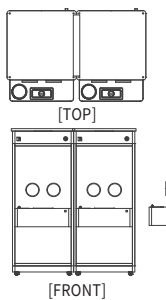
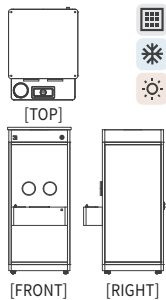
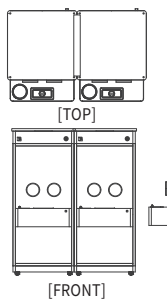


Environmentally-friendly Powder Coatings & High-quality Aluminum Frame

- Pollution-preventing, environmentally-friendly powder coatings
- Solid & sturdy with premium feel owing to high-quality aluminum frame

SPECIFICATION

*Specifications are subject to change without notice.

Category	TOGA-TB01F	TOGA-TB02F	TOGA-TBR01F	TOGA-TBR02F
Product Image				
Exterior Dimensions (WxDxH mm)	1,000 X 1,000 X 2,360	2,000 X 1,000 X 2,360	1,000 X 1,000 X 2,360	2,000 X 1,000 X 2,360
Interior Dimensions (WxDxH mm)	920 X 920 X 1,950	920 X 920 X 1,950 920 X 920 X 1,950	920 X 920 X 1,950	920 X 920 X 1,950 920 X 920 X 1,950
Weight	250kg ±	500kg ±	250kg ±	500kg ±
Power Consumption	91W	182W	622W	1244W
Temperature Control System	-	-	Equipped with air conditioner / heater	Equipped with air conditioner / heater (2EA)
Temperature Control Range	-		18°C ~ 32°C	
No. of Operators	1 Person	2 Persons	1 Persons	2 Persons
Pressure Control	Switch between positive and negative pressure			
Voltage & Frequency	AC110~220V 50/60Hz			
Fan Module	8214J/2H4P,38W			
Air Purification System (WxDxH mm)	HEPA filter (500 X 500 X 85)			
Materials	Exterior:1.2T Powder-coated steel / Frame : Aluminum profile			
Window	- 5T Transparent polycarbonate - Gradient coating (on bottom half for privacy)			
Door	5T Transparent polycarbonate			
Workstation	- 8-inch latex glove port - Shelf for storing diagnostic kits, cotton swabs, etc. (100kg maximum weight)			
Control Panel	-7-inch LED touch display -Fan on/off, pressure control, fan speed (5 levels), light on/off, air conditioner/heater on/off			
Communication System	Wireless intercom (headset + speaker)			
Portability and Expandability	- Caster wheels (can be used both in/outdoors) - Can be connected and installed in a row			
Disposal System	Motion sensor-operated disposal			
Sterilized Storage Bin (WxDxH mm)	Stainless steel (323X152X174)			

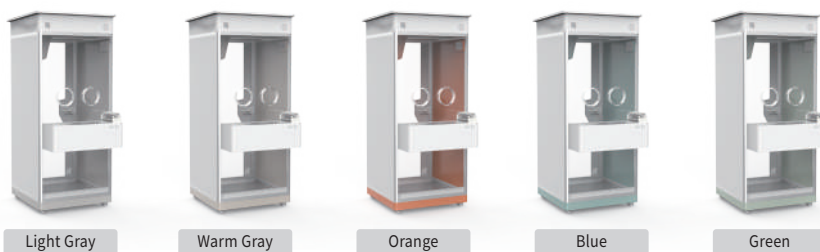
APPLICATIONS

MODULAR INSTALLATION



Can be installed as individual booths or connected in a row depending on the needs of the institution, such as number of medical staff being dispatched, space considerations and other factors.

FIVE COLOR OPTIONS AVAILABLE



Other colors available by inquiry

OPTIONAL LOGO PRINTING SERVICE



(ex)

Print the name or logo of your institution on the front of the shelf for a more professional look.

PRODUCT INQUIRIES



| HEAD OFFICE | 222, HanshinSMeca, Techno 3-ro, Yuseong-gu, Daejeon, 34016, Korea Tel.+82-42-936-4520 Fax.+82-42-621-2892
| SEOUL OFFICE | E-903, SKTechnopark, 60 Haan-ro, Gwangmyeong-si, Gyeonggi-do, 14322, Korea Tel.+82-2-2083-2548 Fax.+82-2-2083-2549
| Homepage | www.gtscien.com
| Rep. e-mail | intl.partner@gtscien.com

